

MARC'S TREEHOUSE LODGE INTRODUCTION

Imagine..... inhale the fresh balmy air of African Bushveld. Fall asleep to the gurgling of the river, interrupted by the eerie whoops of hyena, spine-chilling wails of jackals and the plaintive cry of the thick-tailed bushbaby. Awaken to the melodious chorus of birdsong and watch the activity of wildlife drinking at the river or at our spotlit waterhole. Walk along the pristine banks of the perennial Klaserie River amongst huge Sycamore Figs and giant Matumi trees.....this is Marc's Treehouse Lodge.

In South Africa, as in the rest of our world, as human populations grow, so indigenous, pristine habitats are vanishing, along with their associated plant and animal species.

Consequently there is an urgent need amongst nature enthusiasts to immerse themselves in the bush, affording a fleeting chance to relax and let Nature remove the everyday strains of life. We have attempted to offer the bush connoisseur an opportunity to satisfy the need described above.

Marc's Treehouse Lodge offers rustic but comfortable accommodation geared to put one in close contact with the sights, sounds and scents of the wild. The treehouses are made of wood and reeds under thatch and blend harmoniously into the dense riverine vegetation.

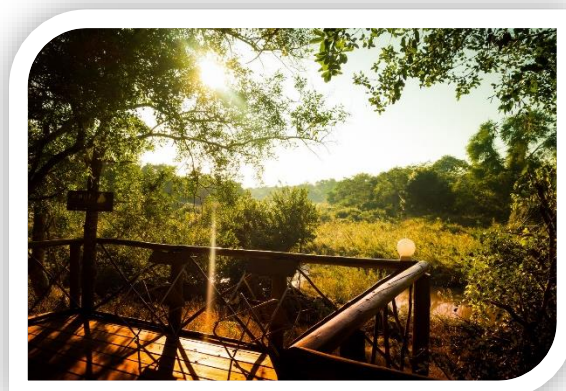
Creature comforts include electric fans, mosquito nets and comfortable beds, with linen, towels and soap provided. 24 hour WIFI is available to all guests. Each treehouse has its own private ablutions and has a viewing deck overlooking the perennial Klaserie River or the "Breakfast" Dam, where animals often come to drink.

The treehouses are unobtrusively located on the elevated banks of the river, providing excellent views of the terrain. Marc's Treehouse Lodge is part of the Motlala Game Reserve which boasts well-watered grazing for its varied fauna. White and Black Rhino, Buffalo, Giraffe, Zebra along with the numerous antelope have made the Motlala Reserve a real wildlife paradise. Among the predators, Leopard and Hyena are more often heard than seen. The nights at Marc's Treehouse Lodge are enriched by the calls of its denizens : the eerie whoops of hyena; the spine-tingling wail of jackals , the distant roar of lions and the plaintive cry of the thick-tailed bushbaby add an unforgettable aural dimension to one's appreciation of the bush.

Birds tend to be more vocal than most other creatures. In the thick canopy of the treetops at Marc's Treehouse Lodge – probably due to restricted visibility – the avifauna are particularly noisy as they warn of predators, call their mates or proclaim the boundaries of their territories. Among the feathered fraternity at Marc's Treehouse Lodge, colourful specials include Narina Trogon, Purple-crested Touraco, Trumpeter Hornbill, Natal Francolin and Natal Robinchat. The early morning cacophony of birdsong is a stark reminder that one is deep in the riverine bush.

Marc's Treehouse Lodge has attracted not only adventure-seeking tourists but also many authors and journalists – the splendid articles under "Media" bear eloquent testimony to the special experience afforded them at this unique lodge.

ACCOMMODATION



Guests at Marc's Treehouse Lodge are adventurous and young at heart. They are prepared to forfeit certain luxuries in the pursuit of a real African bush experience. They certainly are not afraid of frogs and spiders. The Treehouse Lodge is unique and caters for tourists of very differing financial means.

The treehouses at Marc's Treehouse Lodge are made of canvas and reed walls. As a result there is reduced climate control in the treehouses. If it is cold and windy, then the reed walls offer limited protection. The treehouses are not completely insect-proof or even frog-proof insofar as there are small gaps between the reeds and the thatched roofs, but this adds to the adventure!

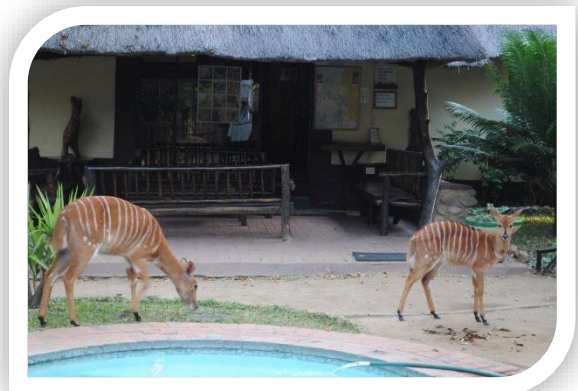
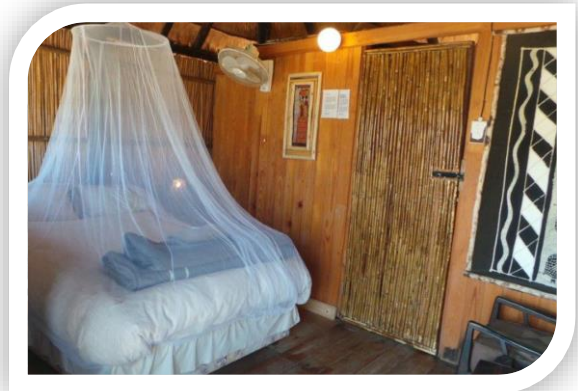
Accommodation at Marc's Treehouse Lodge is secure, comfortable and relaxed. We have a choice of accommodation types: 12 reed and thatch treehouses, 7 tented units and 2 brick and mortar chalets. There are 3 original treehouses that are not en suite but have private designated ablutions. These are built in trees or have trees as supports. The remaining 9 treehouses are not in trees per se but are built on stilts within the tree canopy and are located in the gallery forest.

Three treehouses overlook an illuminated waterhole, often frequented by our resident buffalo herd while nine treehouses are discreetly nestled in gallery forest along the river. Each treehouse is equipped with beds and linen, soap and towels, overhead fan, mosquito nets and wooden viewing deck. In addition we have added two brick and mortar guest houses as well as seven equipped canvas tents for those of our clients that prefer these types of accommodation. Each tented unit has bed and bedding, electric light, fan and plugs and has its own deck. There are mosquito nets above the beds or on windows and door openings. The tented units share 3 showers and 3 toilets.

Marc's Treehouse Lodge has a swimming pool, a bush bar and a rustic boma where 3 course meals are served. After your evening meal, which always has a typical African flavour, you can relax around the crackling campfire and share your impressions of the day's wildlife highlights and adventures.

GENERAL INFORMATION

Our BUSH WALKS are very popular insofar as our guests are afforded a brilliant opportunity to get really close to Nature on foot. Guests may experience an acute adrenalin charge when in the presence of Big Five animals such as elephant, lion, rhino and buffalo. Guests on our Bush Walks are always accompanied by two armed rangers. Although there is no legal limit to the minimum age of participants, Viva Safaris is informed by the recommendations of FGASA (Field Guides Association of S.A.). FGASA recommends that the minimum age be 16. Tourists aged between 12 and 16 may be permitted to participate in the bush walks as long as their parents take full responsibility in ensuring their children strictly obey all instructions from our rangers.



BUSH WALK WITH ARMED RANGER

TRANSFERS to and from Gauteng to our accommodation establishments are in air-conditioned Toyota Quantums. We offer you excellent security as we conduct door-to-door collection from your homes, hotels, hostels or Oliver Tambo Airport, thus ensuring your safety. Lunch stops are made at Dullstroom or Nelspruit.

THE SUNSET DRIVE affords you your first opportunity of seeing Africa's animals. Our qualified guide will take you on our open 4 x 4 Land cruiser Game Drive. Stops will be made to photograph the stunning sunsets and to listen to the night sounds and admire the clear Southern hemisphere constellation. Spotlights are used to locate elusive nocturnal animals.

BEAUTIFUL MARULA TREE BOMA

THE BUSH BRAAI is held on the first night of our safaris.

Viva Safaris has acquired a 20 hectare property deep in Balule – in fact over 10km from the Main gate. We have built a beautiful Boma under a magnificent Marula Tree which we have protected against elephants by a ring of sharp-edged rocks. We have a flush toilet and wash hand basin. Armed rangers will patrol while you enjoy a BUSH BRAAI in this remote piece of Africa.

OUR OPEN GAMEVIEWER

SAFARIS IN KRUGER are conducted on nine-seater open game viewing vehicles. The open game viewers offer elevated vantage positions from where your game viewing and photographic opportunities are greatly enhanced. All our game viewing vehicles are 4 x 4 conversions with access to all roads in all weather conditions.

PANORMA ROUTE

THE BLYDE RIVER CANYON , including the THREE RONDAWELS, is visited on the return journey

TARIFFS

Tariffs include all transfers, all entry fees, all game drives and game walks and accommodation on a dinner, bed and breakfast basis.

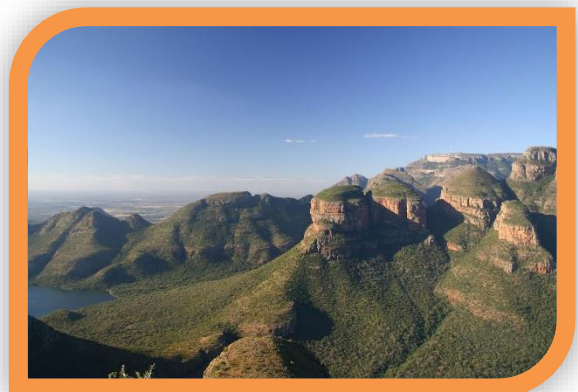
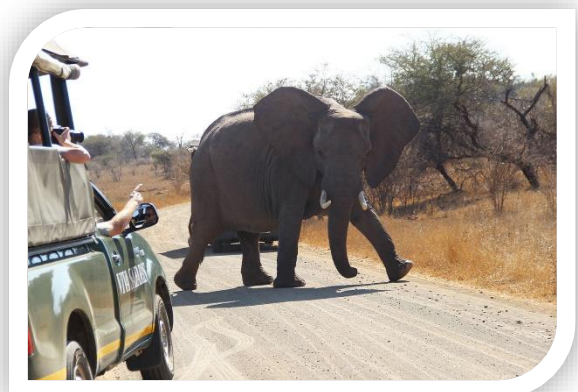
Excluded are lunches on transfer days and the day spent in Kruger Park, drinks, gratuities and personal items.

WHY US?

- Our products offer unbeatable value for money
- Unequalled variety of wildlife experiences in various Game Reserves
- Secure collection from your hotel/hostel/home/airport
- Guaranteed daily departures
- Member of SA Tourism Services Association
- No hidden costs
- We have operated successfully since 1991
- We operate our own lodges and guarantee levels of excellence

WHAT TO BRING ?

- Casual neutral-coloured clothes by day and a pullover for the Sunset Drive

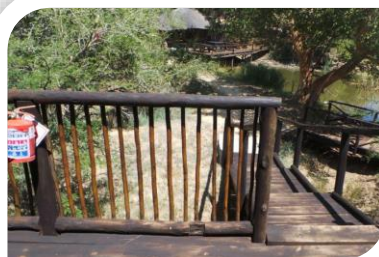


- Walking shoes, sun hat, sunglasses and swimming gear
- Sunscreen and insect repellent
- Flashlight, binoculars and photographic equipment
- Money for drink, personal expenses and lunches in Kruger and on transfer days
- A keen pair of eyes to help us spot all the animals

INDEMNITY FORMS

Indemnity forms must be signed at the start of your safari. We recommend that you take out insurance against personal accident, medical expenses and baggage loss.

TREEHOUSES



TENTS - SHARED FACILITIES

